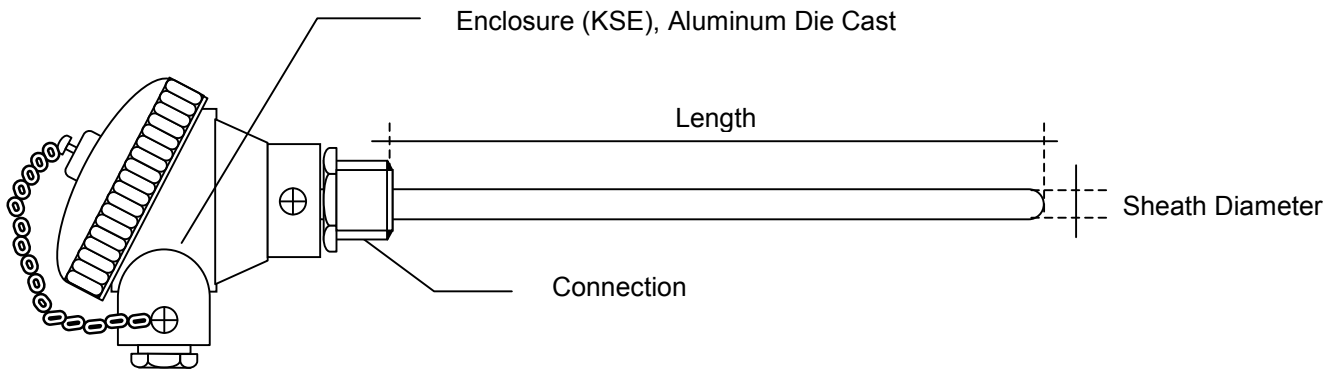


## Enclosure (KSE) Mineral Insulated Thermocouple Sensor

**HoTemp – HT1** thermocouples are very simple and durable temperature sensors. They are comprised of two different materials joined at one end generate voltage in proportion to the heat it is measuring or monitoring. Class 1 standard Type (K, J, T, & N) for measurement of a wide range of temperatures from -200°C ~ 1100°C. Thermocouples are most suitable for measuring over a large temperature range, up to 1800 K. Variety of thermocouples design are available, applicable for different industrial.



### ORDERING INFORMATION

**HT1**   **X**   **X**   **XXX**   **X**   **X**

#### DESIGN TYPE

Enclosure (KSE), Mineral Insulated Thermocouple Sensor

#### THERMOCOUPLE CALIBRATION TYPE

<b>K</b> – Single (Chromel/Alumel)	<b>T</b> – Single (Copper/Constantan)
<b>KK</b> – Dual (Chromel/Alumel)	<b>TT</b> – Dual (Copper/Constantan)
<b>J</b> – Single (Iron/Constantan)	<b>N</b> – Single (Nicrosil/Nisil)
<b>JJ</b> – Dual (Iron/Constantan)	<b>NN</b> – Dual (Nicrosil/Nisil)

#### SHEATH DIAMETER

<b>1</b>	6.0	<b>6</b>	12.0
<b>2</b>	6.35	<b>7</b>	15.0
<b>3</b>	8.0	<b>8</b>	18.0
<b>4</b>	9.5	<b>9</b>	20.0
<b>5</b>	10	<b>10</b>	<b>Others</b>

#### SHEATH LENGTH

050	150	250	<b>Others</b>
100	200	300	

#### SHEATH MATERIAL

<b>1</b>	SUS304	<b>3</b>	SUS321	<b>5</b>	Incoloy 800	<b>7</b>	Inconel 600
<b>2</b>	SUS316	<b>4</b>	SUS310	<b>6</b>	Incoloy 825	<b>8</b>	<b>Others</b>

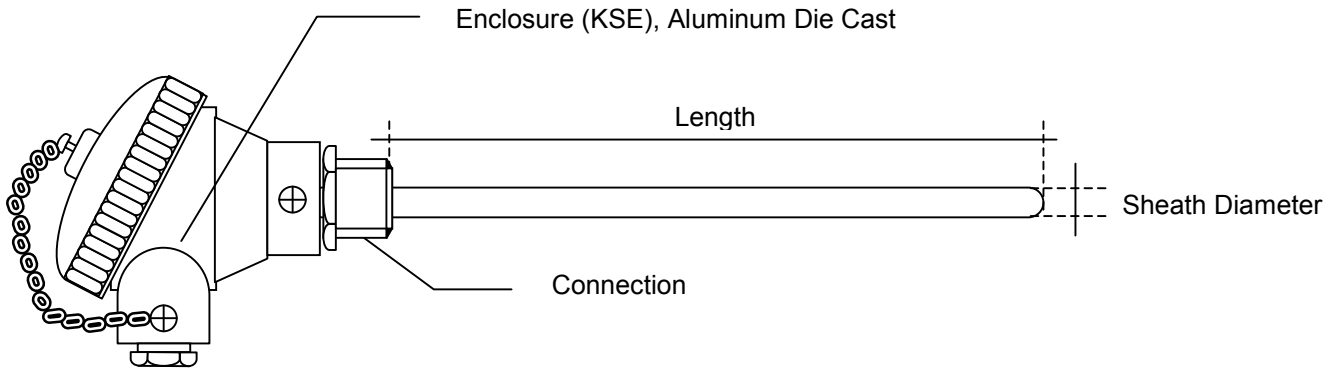
#### CONNECTION SIZE

<b>1</b>	1/4" Bsp	<b>3</b>	1/2" Bsp	<b>5</b>	1" Bsp
<b>2</b>	3/8" Bsp	<b>4</b>	3/4" Bsp	<b>6</b>	<b>Others</b>

\*\*For other specification, please contact our sale representative\*\*

## Enclosure (KSE) Mineral Insulated RTD Sensor

**HoTemp – HT1 (PT-50, PT-100, PT-500, PT-1000)** are used to measure temperature by correlating the resistance of the element with temperature. Most RTD elements consist of a length of fine-coiled Platinum wire wrapped around a ceramic core. The element is usually quite fragile, so it is often placed inside a sheathed probe to protect it. The material has a predictable change in resistance as the temperature changes; it is this predictable change that is used to determine temperature. With measurement range from  $-200^{\circ}\text{C} \sim 850^{\circ}\text{C}$ . RTD are most suitable for measuring various applications like Marine and other industrials.



### ORDERING INFORMATION

**HT1**   **X**   **X**   **XXX**   **X**   **X**

#### DESIGN TYPE

Enclosure (KSE), Mineral Insulated Thermocouple Sensor

#### THERMOCOUPLE CALIBRATION TYPE

<b>PT05 – PT50Ω</b>	<b>PT50 – PT500Ω</b>
<b>PT01 – PT100Ω</b>	<b>PT10 – PT1000Ω</b>

#### SHEATH DIAMETER

<b>1</b>	6.0	<b>6</b>	12.0
<b>2</b>	6.35	<b>7</b>	15.0
<b>3</b>	8.0	<b>8</b>	18.0
<b>4</b>	9.5	<b>9</b>	20.0
<b>5</b>	10	<b>10</b>	<b>Others</b>

#### SHEATH LENGTH

050	150	250	<b>Others</b>
100	200	300	

#### SHEATH MATERIAL

<b>1</b>	SUS304	<b>3</b>	SUS321	<b>5</b>	Incoloy 800	<b>7</b>	Inconel 600
<b>2</b>	SUS316	<b>4</b>	SUS310	<b>6</b>	Incoloy 825	<b>8</b>	<b>Others</b>

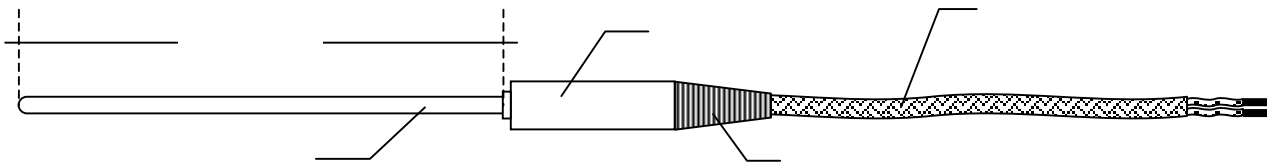
#### CONNECTION SIZE

<b>1</b>	1/4" Bsp	<b>3</b>	1/2" Bsp	<b>5</b>	1" Bsp
<b>2</b>	3/8" Bsp	<b>4</b>	3/4" Bsp	<b>6</b>	<b>Others</b>

\*\*For other specification, please contact our sale representative\*\*

# Mineral Insulated Metal Sheath Probe, With Extension Cable

**HoTTemp - HTSP1** M.I. metal type sensors are features for chemical resistance, robust “pistol-grip” ergonomic design and a ruggedized penetration sheath to reduce user fatigue, and increase durability. Design complete with stainless steel braided extension cable, M.I. holder & spring assembly.



## ORDERING INFORMATION

### DESIGN TYPE

Mineral Insulated Metal Sheath Probe Sensor With Extension Cable

### THERMOCOUPLE CALIBRATION TYPE

<b>K</b> – Single (Chromel/Alumel)	<b>T</b> – Single (Copper/Constantan)
<b>KK</b> – Dual (Chromel/Alumel)	<b>TT</b> – Dual (Copper/Constantan)
<b>J</b> – Single (Iron/Constantan)	<b>N</b> – Single (Nicrosil/Nisil)
<b>JJ</b> – Dual (Iron/Constantan)	<b>NN</b> – Dual (Nicrosil/Nisil)
<b>K</b> – Single (Chromel/Alumel)	<b>T</b> – Single (Copper/Constantan)
<b>KK</b> – Dual (Chromel/Alumel)	<b>TT</b> – Dual (Copper/Constantan)
<b>PT05</b> – PT50Ω	<b>PT50</b> – PT500Ω
<b>PT01</b> – PT100Ω	<b>PT10</b> – PT1000Ω

### SHEATH LENGTH (mm)

050	150	250	<b>Others</b>
100	200	300	

### SHEATH MATERIAL

<b>1</b>	SUS304	<b>3</b>	SUS321	<b>5</b>	Incoloy 800	<b>7</b>	Inconel 600	
<b>2</b>	SUS316	<b>4</b>	SUS310	<b>6</b>	Incoloy 825	<b>8</b>	<b>Others</b>	

### SHEATH DIAMETER

<b>1</b>	1.0	<b>6</b>	3.0	<b>11</b>	6.0
<b>2</b>	1.5	<b>7</b>	3.2	<b>12</b>	6.35
<b>3</b>	1.6	<b>8</b>	4.0	<b>13</b>	8.0
<b>4</b>	2.0	<b>9</b>	4.5	<b>14</b>	<b>Others</b>
<b>5</b>	2.3	<b>10</b>	4.8		

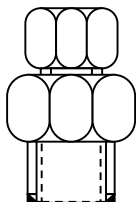
### HOT JUNCTION

<b>1</b>	Grounded	<b>2</b>	Ungrounded	<b>3</b>	<b>OTHERS</b>	
----------	----------	----------	------------	----------	---------------	--

### EXTENSION CABLE TYPE (ANSI / IEC / JIS COLOUR) and Length (Mtr)

<b>TE/TE</b>	(Teflon / Teflon)	<b>1M</b>	1 mtr
<b>FG/FG</b>	(Fiberglass / Fiberglass)	<b>2M</b>	2 mtr
<b>PVC/PVC</b>	(PVC / PVC)	<b>3M</b>	3 mtr
<b>SIL/SIL</b>	(Silicon / Silicon)	<b>5M</b>	5 mtr
<b>**Option**</b>	SSOB (Stainless Braided)	<b>OTHERS</b>	

\*\*For other specification, please contact our sale representative\*\*



### \*\*OPTION\*\* COMPRESSION FITTING

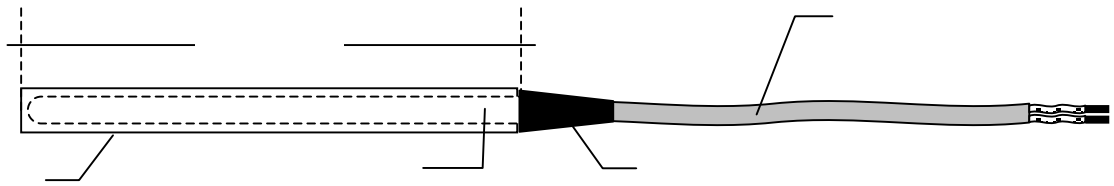
1/8"	3/8"	3/4"	
1/4"	1/2"	<b>Others</b>	

For other specification, please contact our sale representative\*\*

SP1 X XXX X X X XM

# Teflon Coated Metal Sheath Sensor with Extension Cable

**HoTTemp – HTSP2** M.I. probe type sensors are features of Teflon coated penetration sheath suitable for chemical industrial usages. Design complete with Teflon extension cable and Teflon seal end assembly.



## ORDERING INFORMATION

**SP2**    **X**    **XXX**    **X**    **X**    **X**    **XM**

### DESIGN TYPE

Mineral Insulated Metal Sheath Probe Sensor With Extension Cable

### THERMOCOUPLE CALIBRATION TYPE

<b>K</b> – Single (Chromel/Alumel)	<b>T</b> – Single (Copper/Constantan)
<b>KK</b> – Dual (Chromel/Alumel)	<b>TT</b> – Dual (Copper/Constantan)
<b>J</b> – Single (Iron/Constantan)	<b>N</b> – Single (Nicrosil/Nisil)
<b>JJ</b> – Dual (Iron/Constantan)	<b>NN</b> – Dual (Nicrosil/Nisil)
<b>K</b> – Single (Chromel/Alumel)	<b>T</b> – Single (Copper/Constantan)
<b>KK</b> – Dual (Chromel/Alumel)	<b>TT</b> – Dual (Copper/Constantan)
<b>PT05</b> – PT50Ω	<b>PT50</b> – PT500Ω
<b>PT01</b> – PT100Ω	<b>PT10</b> – PT1000Ω

### SHEATH LENGTH (mm)

050	150	250	<b>Others</b>
100	200	300	

### METAL SHEATH MATERIAL

<b>1</b>	SUS304	<b>3</b>	SUS321	<b>5</b>	Incoloy 800	<b>7</b>	Inconel 600	
<b>2</b>	SUS316	<b>4</b>	SUS310	<b>6</b>	Incoloy 825	<b>8</b>	<b>Others</b>	

### TEFLON COATED DIAMETER

<b>1</b>	4.5	<b>3</b>	8.0	<b>5</b>	12.0	
<b>2</b>	6.0	<b>4</b>	10.0	<b>6</b>	<b>Others</b>	

### HOT JUNCTION

<b>1</b>	Grounded	<b>2</b>	Ungrounded	<b>3</b>	<b>Others</b>	
----------	----------	----------	------------	----------	---------------	--

### EXTENSION CABLE TYPE (ANSI / IEC / JIS COLOUR) and Length (Mtr)

<b>TE/TE</b>	(Teflon / Teflon)	<b>1M</b>	1 mtr
<b>FG/FG</b>	(Fiberglass / Fiberglass)	<b>2M</b>	2 mtr
<b>PVC/PVC</b>	(PVC / PVC)	<b>3M</b>	3 mtr
<b>SIL/SIL</b>	(Silicon / Silicon)	<b>5M</b>	5 mtr
<b>**Option**</b>	SSOB (Stainless Braided)	<b>Others</b>	

\*\*For other specification, please contact our sale representative\*\*